

Pantone

TRANSITION BACK TO DEPENDABLE COLORS

Pantone, Inc., developer of the globally accepted PANTONE Color Systems, is the leading source of traditional and electronic products for the selection and accurate communication of color. With over 40 years of experience, Pantone is recognized as the worldwide market leader in color communication and color technology for the graphic design, printing, publishing, fashion, home furnishings, interiors and industrial design industries. Contact: www.pantone.com

Just as day turns to twilight, Fall 2006 colors are a subtle deepening of the world around, lit with the final glow of the turning horizon. New York designers have found themselves in a sanctuary of color, filled with the constancy of nightfall.

Neutrals take center stage as a soothing reminder of life's many reassurances: from Frost Gray, evocative of a quiet winter morning, to Apple Cinnamon, the essence of freshly brewed tea. The neutrals, while simple, provide a landscape for complexity. The touches of rich tones in the palette add an exotic dimension to the neutrals — especially relevant as accessories continue to prevail. The combination of Pale Khaki and Red Mahogany tells the story of a classic book, bound with a velvet ribbon. Vetiver paired with Purple Magic is a plush couch decorated with a silk pillow.

Warmth and vibrancy have found a way to harmonize. This season's orange, Golden Ochre, goes to the warm side with an umber undertone and a touch of elegance. Mineral Red adds an inviting sense of intrigue when used against a background of Simply Taupe, a basic yet comforting neutral.

Strong through several consecutive seasons, noteworthy Bijou Blue gives a sense of constancy, a color we can rely on. Leaning on teal, it is a rare shade that universally complements all skin tones — a beautiful color for flattering designs.

"Fall 2006 is a time to transition back to more dependable colors," says Leatrice Eiseman, executive director, Pantone Color Institute. "We're looking for colors we can wrap ourselves in — a feeling achieved through classic neutrals as a base, accented with rich hues. Half of the palette, remarkably, is expressed in basic chestnuts — all very familiar, very approachable tones. It's an inviting warmth not seen in the past few seasons that designers are now embracing."

For 12 years, Pantone, Inc. has surveyed the designers of New York Fashion Week to bring the season's most important color trends. This information is used to create the Fashion Color Report, which can be viewed online at www.pantone.com/fall2006. Excerpts appear on the following pages.

PANTONE Colors displayed here may not match PANTONE-identified standards. Consult current PANTONE® publications for accurate color. PANTONE® and other Pantone, Inc. trademarks are property of Pantone, Inc.

FALL 2006 COLORS



SIMPLY TAUPE



PALE KHAKI



APPLE CINNAMON



GOLDEN OCHRE



MINERAL RED



FROST GRAY



VETIVER



BIJOU BLUE



PURPLE MAGIC



RED MAHOGANY

CYNTHIA STEFFE

PROMINENT COLORS

i'm working with concentrated colors and smoky complements that have an aged look: smoky yet intense blues, rosy mauves, etc.

INSPIRATION

classic menswear, i'm using feminine hues that work well as complements to a menswear base.

SIGNATURE COLOR

a saturated blue-violet

COLOR PHILOSOPHY

colors that are fresh and flatter the wearer.

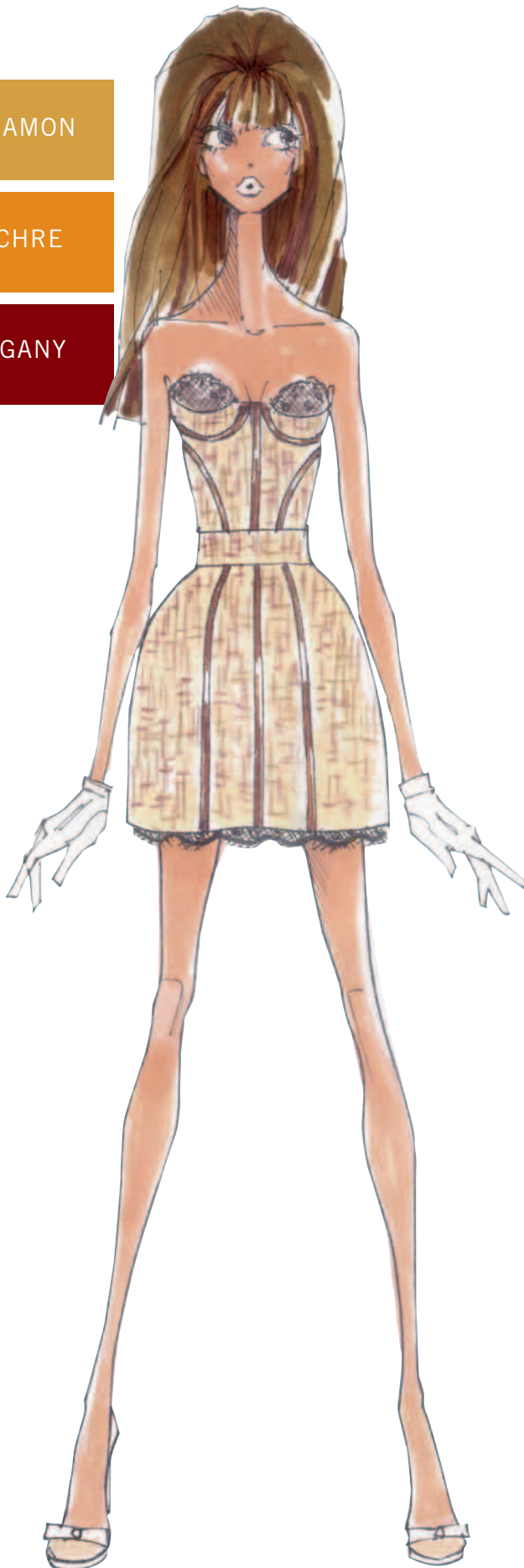


BIJOU BLUE

APPLE CINNAMON

GOLDEN OCHRE

RED MAHOGANY



BABY PHAT BY KIMORA LEE SIMMONS

PROMINENT COLORS

baby phat's fall 2006 collection is about luxurious colors mixed with contrasting accents that punctuate our color story, starting with cool gray tones that transition into warm tones of rich burgundies and browns that are weaved with rich metallic hints.

INSPIRATION

the upcoming baby phat fall 2006 collection is inspired by the elegance and panache of 20th century red carpet glamour. expect to see vamped-up suits, dresses, prints and fabrics where retro glam meets hip-hop royalty.

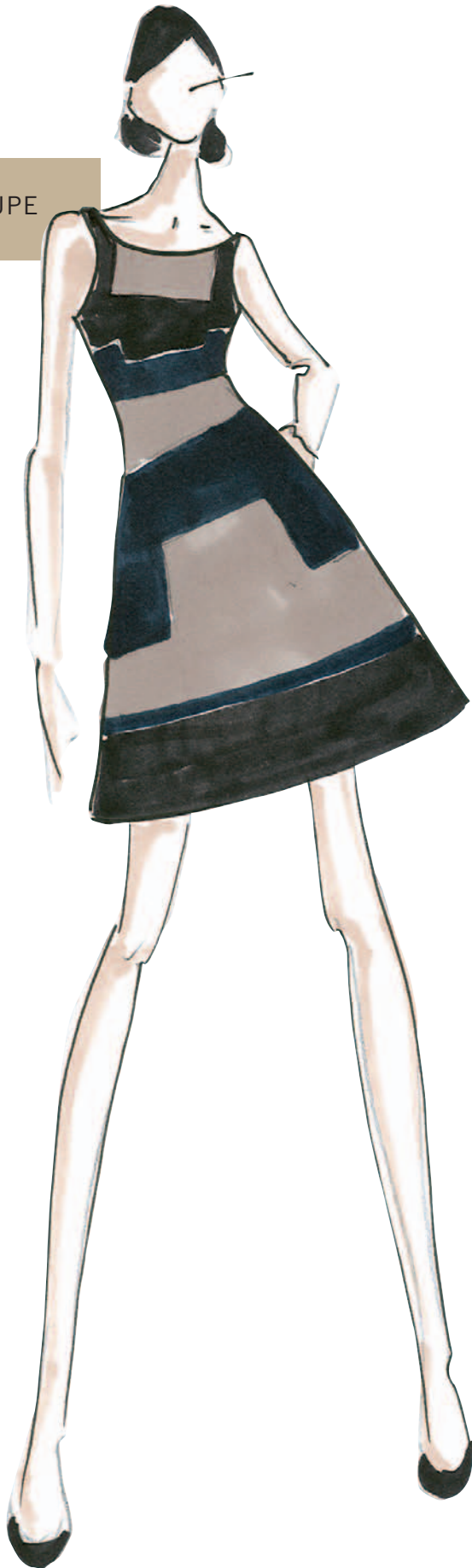
SIGNATURE COLOR

this season brown tones with pastel accents will be all the rage.

COLOR PHILOSOPHY

luxury and royalty define the baby phat color philosophy for fall 2006.

SIMPLY TAUPE



LAURA PORETZKY FOR ABAETÉ

PROMINENT COLORS

titanium, sapphire navy and onyx. the combinations of sapphire navy and wisteria and onyx and ginger.

INSPIRATION

i was inspired by the warm tones combined with black in furniture made by bugatti, and my accents were inspired by the jewel tones that marioni fortuney used in his silk pleated fabrics.

SIGNATURE COLOR

warm gray and navy

COLOR PHILOSOPHY

mix dark with dark

MINERAL RED



NANETTE LEPORE

PROMINENT COLORS

lacquer red, boudoir beige, smoky gray, jet black, gunmetal

INSPIRATION

the salons of edwardian england; the heart of artistic bohemia

SIGNATURE COLOR

lacquer red



MICHAEL VOLLBRACHT FOR BILL BLASS

PROMINENT COLORS

lilac and chartreuse; teal and black

INSPIRATION

vintage pastoral print from bucol

SIGNATURE COLOR

teal and/or chartreuse

COLOR PHILOSOPHY

pretty, feminine soft colors juxtaposed
with earthy hues

PURPLE MAGIC



FROST GRAY

PETER SOM

PROMINENT COLORS

fall 2006 is about a graphic mix of jet black and cool dove gray with antique white. warm shades of reds – from pale rose to lipstick – add femininity.

INSPIRATION

cecil beaton's ascot from "my fair lady"

SIGNATURE COLOR

dove gray

COLOR PHILOSOPHY

this season, a graphic but feminine combination of colors keeps it clean and sleek without being overpowering.



PALE KHAKE

VETIVER

AKIKO OGAWA

PROMINENT COLORS

graduations of gray, gold: PANTONE 13-0000TP moonbeam, PANTONE 15-1305TP feather gray, PANTONE 17-6205TP elephant skin, PANTONE 18-0403TP dull gull gray

INSPIRATION

this season i was inspired by images of paris in the 1920s by jacques henri lartigue, most particularly a photograph of wilting flowers.

SIGNATURE COLOR

PANTONE 15-1305TP feather gray

COLOR PHILOSOPHY

for this fall, i wanted my colors to be highly nuanced and evoke a classical, refined ambience. for me, this is manifested as a cloudy, hazy palette of graduations of gray from smoky slate to charcoal.