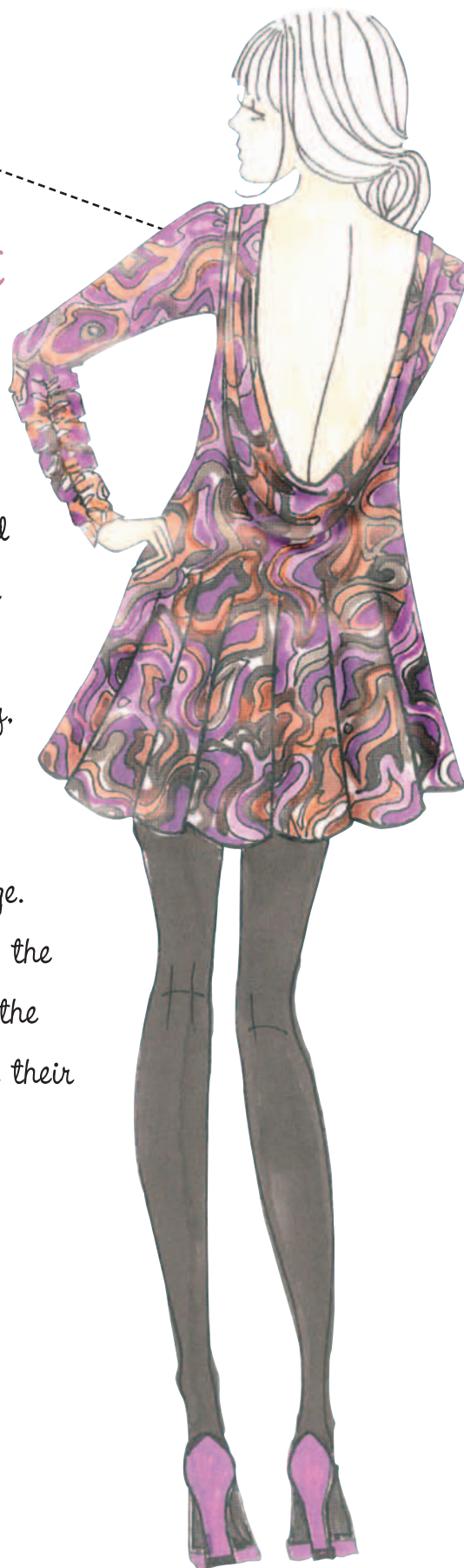


Annual Color Forecast

Color is one of the most powerful ways that designers can communicate messages about products, services, causes and ideas. And color forecasts are the place where theory and practice come together. Some color choices are based on timeless principles, while others are influenced by cultural waves. Not surprisingly, this year's forecasts are influenced by, among other things, the greening of America and concerns about nature and climate change. A special thanks to the Color Association of the United States, the Color Marketing Group, the Pantone Color Institute and many others for their contributions to this special report.



Pantone

 COMPLEX AND EXOTIC HUES SPICE UP WOMEN'S FASHION

Each season, Pantone, Inc., surveys the fashion designers of New York Fashion Week to collect feedback on prominent collection colors, color inspiration, color philosophy and each designer's signature shade. This information is used to create the PANTONE Fashion Color Report, which is available free-of-charge from the Pantone website at www.pantone.com/fall2007. It serves as a reference tool throughout the year for fashion enthusiasts, reporters and retailers. The report features the top 10 colors for women's fashion for Fall '07 along with designer sketches, quotes and head shots. Excerpts appear on the following pages.

According to the report, "complex" and "exotic" describe the intriguingly unusual and inviting color palette for women's fashion for Fall '07. The traditional neutral shades expected for autumn have been replaced this season with rich, nuanced hues, offering more opportunity for creativity with interesting and unexpected color combinations.

"Designers find inspiration in a variety of places, but one thing they all have in common this season is a rich, complex color palette to stimulate creativity," said Leatrice Eiseman, executive director of the Pantone Color Institute. "Nuanced colors with subtle undertones enhance the ever-present neutrals and allow for clever and extraordinary color combinations. Pairing designer pieces with mainstream staples has become a way of life, and color adds an important dimension for expressing one's unique sense of style."

THE TOP 10 MOST DIRECTIONAL WOMEN'S READY-TO-WEAR COLORS FOR FALL 2007 ARE:



Spicy Chili Pepper and exotic Lemon Curry stimulate the taste buds, entice the senses and enliven any wardrobe. Purple Wine, the ultimate expression of creativity, marries purple and wine, broadening the appeal of purple for fashion. The violet undertones of Dusk give gray a whole new dimension, making this fall's neutral much more desirable. Carafe, a deep, espresso brown, adds contrast to the palette, providing a rich alternative to the usual black or charcoal. Sumptuous Cashmere Rose is not only the perfect complement to any of fall's colors but also flatters any complexion.

Many seasons have paid homage to nature, and fall '07 is no exception. Shale Green takes the shade in a murky, blue/gray direction, while foliage-inspired Green Moss goes to the yellow side. Earthy Burnt Ochre is this autumn's orange, and sophisticated Stargazer continues the trend of turquoise but with a deeper intensity.

PANTONE Colors displayed here may not match PANTONE-identified standards. Consult current PANTONE for fashion and home color system publications for accurate color. PANTONE® and other Pantone, Inc. trademarks are the property of Pantone, Inc.

Mother Nature's Favorite Neutral

by Leatrice Eiseman, Executive Director, Pantone Color Institute

We are all aware of how the word “green” has transitioned into a meaning that goes far beyond the name of a color. It has become the color identity, the word and the symbol, for all that is ecologically correct. Green has developed from simply a color to a word that encompasses social change, environmentally friendly products and a new way of life.

Today, public awareness of green is greater than ever before. In fact, *Time* magazine called the 21st century the Green Century, and Al Gore was nominated for the Nobel Prize for his work on preservation of the environment. Historically, social issues impact color choices because the public tends to gravitate, often subliminally, to the colors most associated with a particular issue.

Many people believe that the beginning of the green movement was in the '60s, when Rachel Carson wrote a book called *Silent Spring*, which contained warnings of environmental disaster. The '70s saw the establishment of Greenpeace, although not everyone listened. The conspicuously consuming 80s flaunted glitzy looks, and, except for the color of money, green was out. Even Kermit the Frog lamented that it wasn't easy being green.

When the economy plunged in the '90s, so did color into recycled beiges, and sustainability entered the lexicon. A reawakened social consciousness concerning preservation of the environment led directly to the broad use of all the so-called natural colors. The vegetal greens and whole grain shades of healthy foods, as well as the green tea of the Wellness movement, played into everything from advertising to fashion and interiors.

Many of the color palettes predicted for '07 and '08 reflect this continued concern for the environment. Various shades of green, Mother Nature's favorite neutral, are prevalent in fashion and home and can be combined with any other color, just as in nature. Water, the earth's most precious commodity, is also represented by the many blues and aquas that symbolize its cleansing and clarifying properties.



Michael Vollbracht for Bill Blass



Jebb Mahshie for Chaiken



green moss

Carmen Marc Valvo

PROMINENT COLORS

Warm neutrals like Birch, Teak and Cool Grays juxtaposed with shots of Purple and Moss

INSPIRATION

Mid-century modern furniture and interior design

SIGNATURE COLOR

Stainless Steel

COLOR PHILOSOPHY

Neutrals with brights

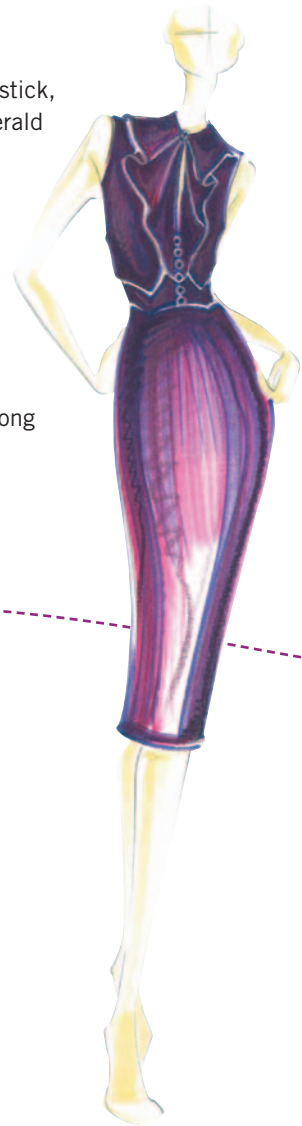
Zac Posen

PROMINENT COLORS
Black, White, Nude, Lipstick, Deep Plum, Cherry, Emerald and stealthy metals like Mercury and Bronze

INSPIRATION
Irises

SIGNATURE COLOR
Deep Plum tones

COLOR PHILOSOPHY
Clean, charming and strong femininity



purple wine

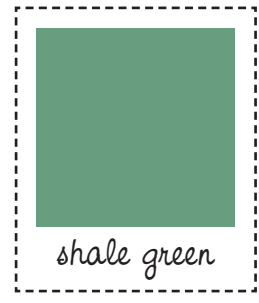
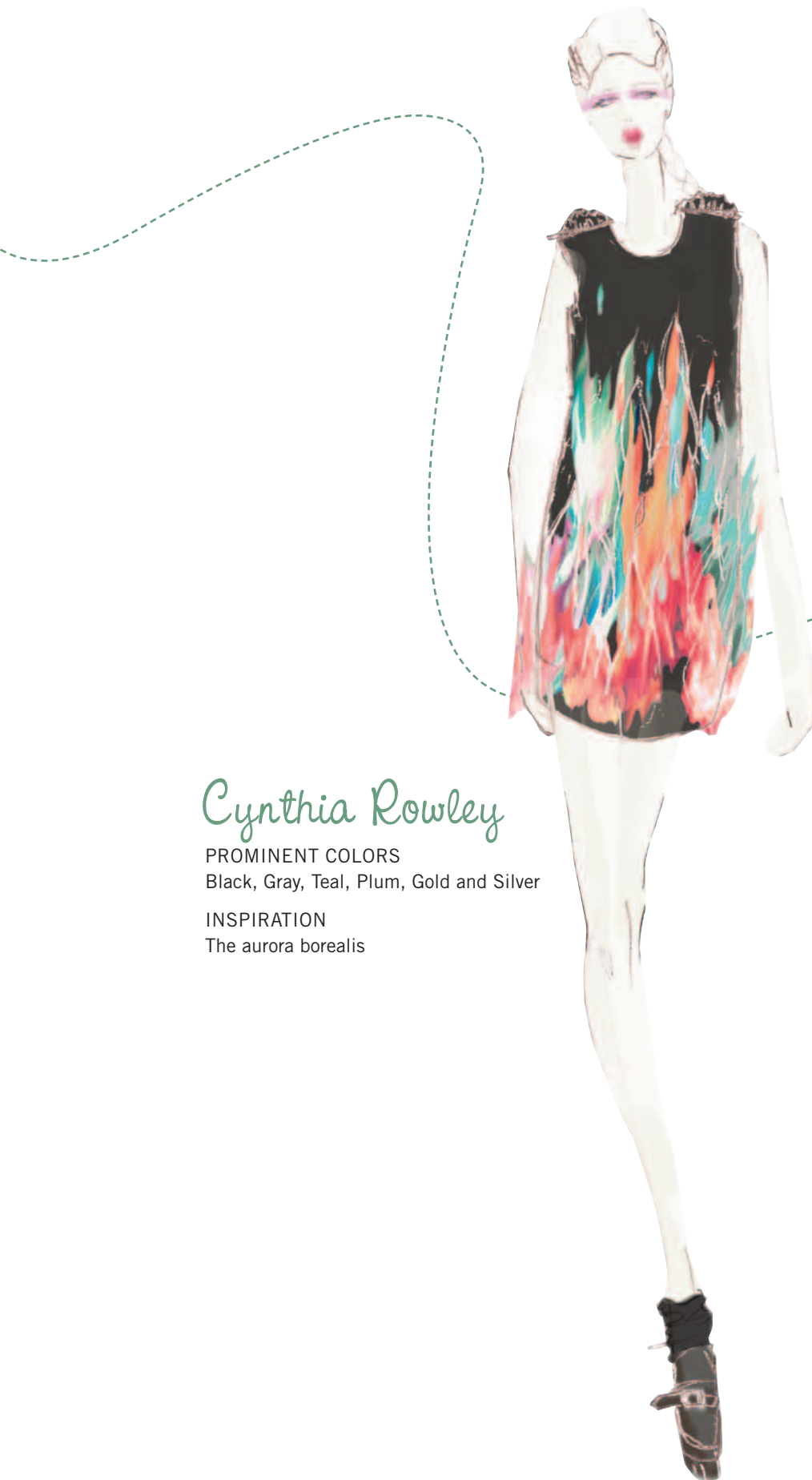
Tracy Reese

PROMINENT COLORS
Black, Navy, Magenta, Rose Carthane, Hershey, Apple, Orchid, Cloudy Gray

INSPIRATION
Interiors

SIGNATURE COLOR
Rose Carthane

COLOR PHILOSOPHY
Use Black as an accessory and layer rich and vibrant color around it



Cynthia Rowley

PROMINENT COLORS
Black, Gray, Teal, Plum, Gold and Silver

INSPIRATION
The aurora borealis



lemon curry

Michael Vollbracht for Bill Blass

PROMINENT COLORS

Golden Yellow and Parrot Green mixed with Dull Maroon; also this season's Yellows, Golds and Mints mixed with Gray and Brown

INSPIRATION

Menswear fabrics mixed with brocades — very Blass

SIGNATURE COLOR

I don't have one.

COLOR PHILOSOPHY

Muted mixed with shock, such as Gray with Red



Reem Acra

PROMINENT COLORS

Jewel tones like Emerald, Ruby and Sapphire accented with my signature Gold

INSPIRATION

A recent exhibit at the Metropolitan Museum of Art in New York "Glitter and Doom: German Portraits from the 1920s." I was taken by the modernity and glamorous decadence of society at that time.

SIGNATURE COLOR

Gold

COLOR PHILOSOPHY

Use layers to express your style; experiment with colors as part of the creative process.

Catherine Malandrino

PROMINENT COLORS

Sleek Black, Glossy White, Metal Gray, Bold Magenta, Violet and Petroleum

INSPIRATION

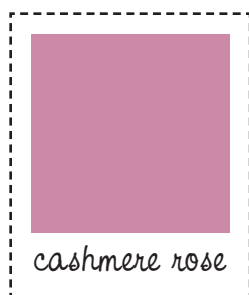
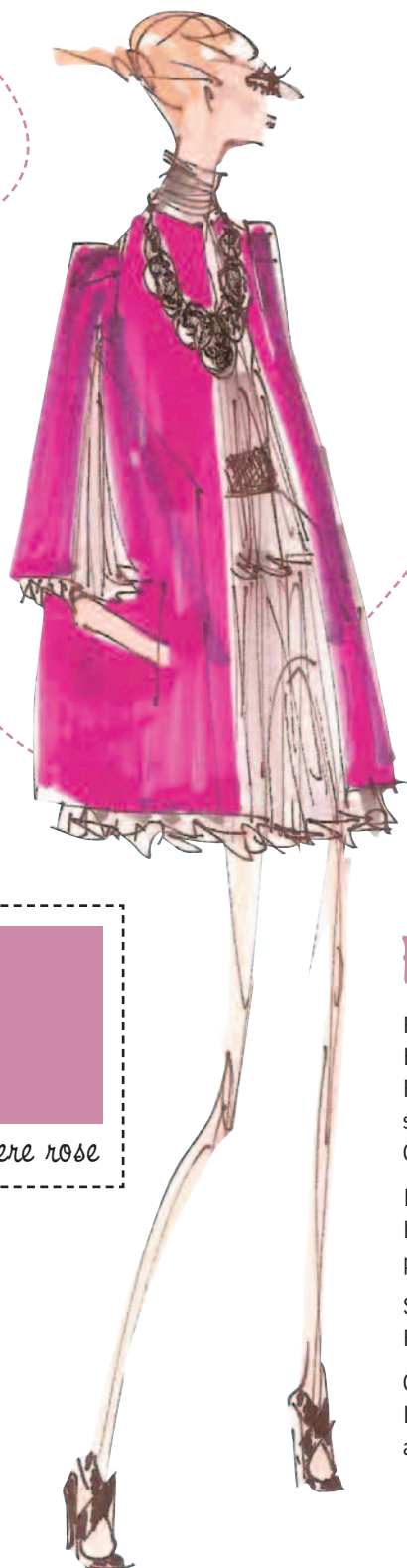
Schiaparelli's Shocking Pink meets carefree Zizi Jeanmaire

SIGNATURE COLOR

Magenta

COLOR PHILOSOPHY

Bold color block



cashmere rose

Peter Som

PROMINENT COLORS

Elegant neutrals such as Midnight Navy, Flannel Gray and Milk Chocolate mixed with shots of acid brights like Fuchsia and Chartreuse, and Black with White

INSPIRATION

Lady's Slipper orchids, John Singer Sargent paintings and the construction of clothes

SIGNATURE COLOR

Raspberry Fuchsia

COLOR PHILOSOPHY

Layering of color and fabric to create nuance and texture



Nanette Lepore

PROMINENT COLORS

Mixed shades of Deep Plum and Violet, Bronze and Charcoal, Charcoal and Deep Plum, Purple Magic, Crown Jewel, Toffee, Steel Gray

INSPIRATION

I've been decorating my new house and was inspired by rich and warm tones.

SIGNATURE COLOR

Plum and Bronze

COLOR PHILOSOPHY

Sumptuous, curl-up luxury



Kai Milla

PROMINENT COLORS

Neutrals such as Espresso Brown and Charcoal Gray with a warm undertone accented by Deep Moss Green and Deep Bordeaux Red; my metal finish of choice this season is a darkened Pewter

INSPIRATION

Imperfect perfection and an embracement of darkness without Black, and, most of all, my husband's touch

SIGNATURE COLOR

Warm Charcoal Gray

COLOR PHILOSOPHY

Finding "The Lighter Side of Darkness"

Gustavo Arango

PROMINENT COLORS

Jewel tones such as Emerald, Sapphire and Ruby, as well as deep, rich colors like Plum and Charcoal

INSPIRATION

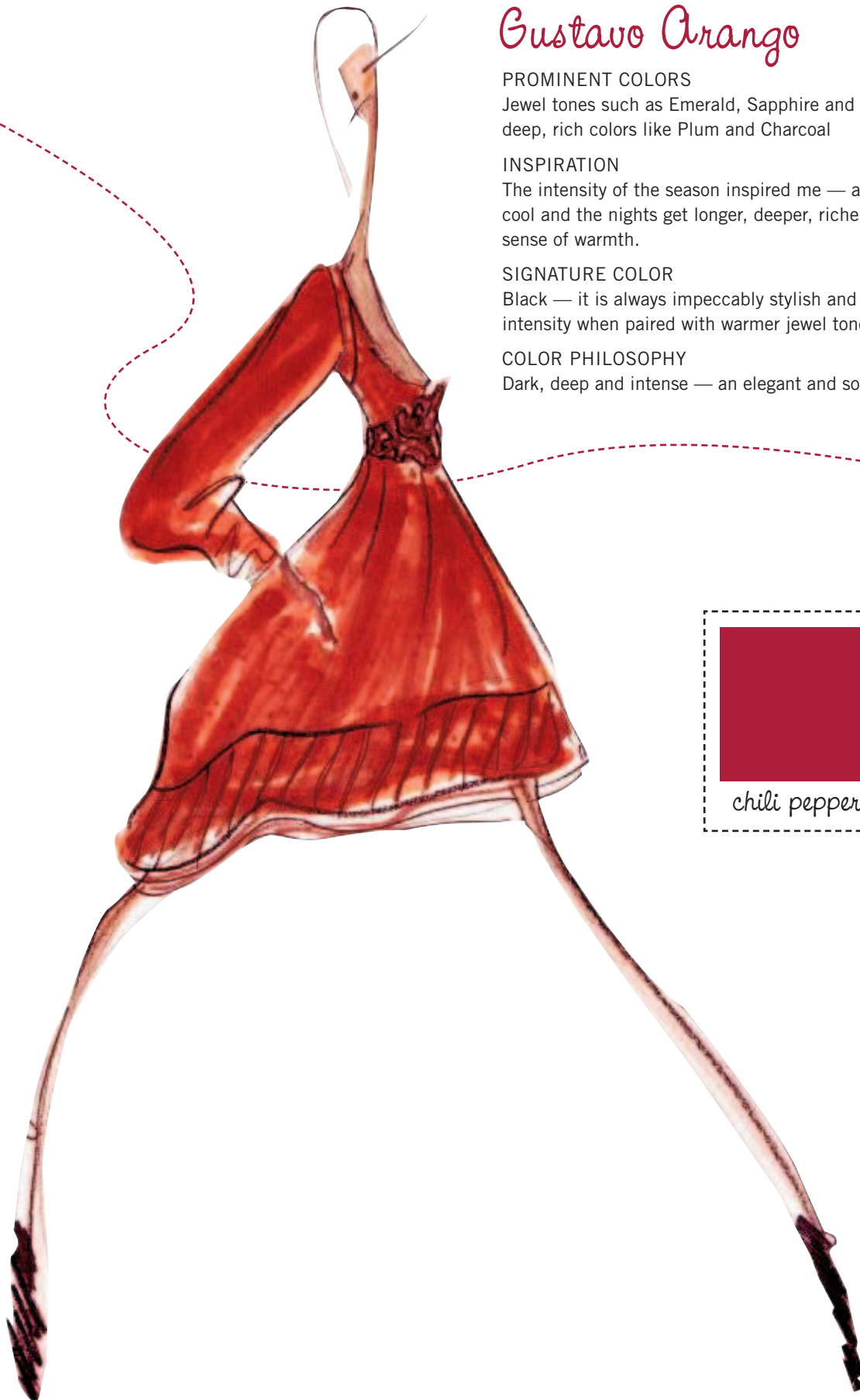
The intensity of the season inspired me — as the temperatures cool and the nights get longer, deeper, richer tones lend a sense of warmth.

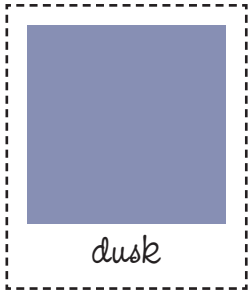
SIGNATURE COLOR

Black — it is always impeccably stylish and adds a bit of intensity when paired with warmer jewel tones

COLOR PHILOSOPHY

Dark, deep and intense — an elegant and sophisticated palette





dusk

Y & Kei

PROMINENT COLORS

Amethyst, Azure Blue, Graphite, Dusty Rose, Cognac, Flour White, Carbon, Oxidized Silver

INSPIRATION

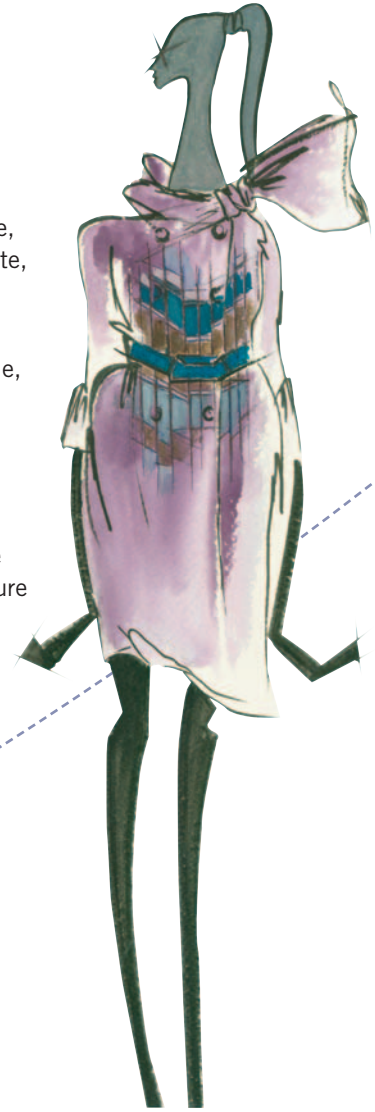
Federation Square in Melbourne, Australia

SIGNATURE COLOR

Light-colored Graphite

COLOR PHILOSOPHY

Neutral tones such as Graphite that will be accentuated by Azure Blue, Cognac and Amethyst



Douglas Hannant

PROMINENT COLORS

Blueberry, Muted Raspberry, Wine, Lavender, Sassafras, many shades of Black

INSPIRATION

Toned-down sophisticated Berry colors; references from the Renaissance

SIGNATURE COLOR

Blueberry

COLOR PHILOSOPHY

Rich, sophisticated and quiet monotone